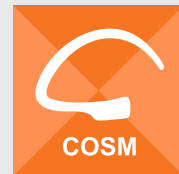




**CREATION OF  
SUSTAINABLE MATERIALS**



AHEAD OF THE CURVE

# INTRODUCTION OF COSM

ISA TanTec is a well-known, leading manufacturer in the leather industry, continually investing in sustainability and working towards a better future. As a result, a new division of ISA TanTec has been established: COSM (Creation of Sustainable Materials), specializing in the development and production of sustainable materials, **in addition to leather**. COSM products are also made following ISA TanTec's LITE manufacturing processes; minimizing carbon footprint, water and chemical consumption.

## **COSM materials are:**

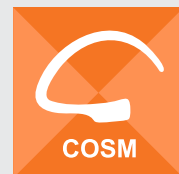
- Free of petrochemicals
- A true green story
- Biodegradable
- Replacing premium synthetic products
- Serving a vegan market

## **COSM as part of ISA TanTec provides:**

- Sustainable material from an existing supplier
- Proven infrastructure
- Quality assurance systems
- Experienced sales team
- Established factory customer service
- After sales service
- Global production facilities

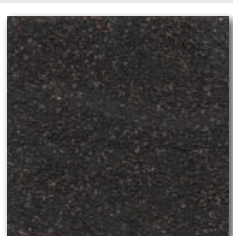




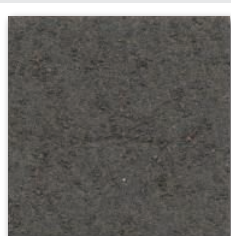


AHEAD OF THE CURVE

## HYPHALITE COLOR PALETTE



BLACK



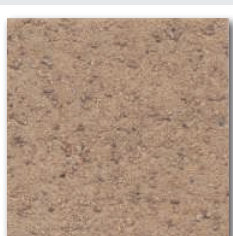
SILENT STORM  
17-1508



CLOVE  
18-1320



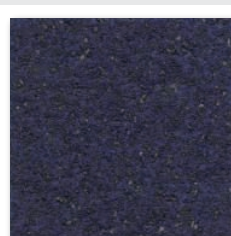
LEATHER BROWN  
18-1142



STARFISH  
16-1120



NUGGET  
16-1148



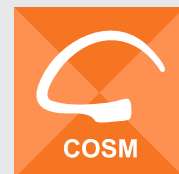
BLUE DEPTHS  
19-3940



RHUBARB  
19-1652







AHEAD OF THE CURVE

# HYPHALITE

Made from locally sourced mushrooms in Vietnam, HyphaLite is all natural. The raw material is farmed without using fertilizers making it biodegradable and compostable. The backer is made from all natural, non-woven materials. HyphaLite is produced by ISA TanTec following LITE manufacturing processes, without using hazardous chemicals. With its genuine features, HyphaLite will be the material supporting your sustainable goals.

## Product Specifications

Weight Range	1.0 - 1.4 mm
Cuttable Area	100%
MOQ Requirement	1,500 sqft per color



As of 1st October, 2020



**HYPHALITE  
CLOVE**



**HYPHALITE  
STARFISH**



**ISA TanTec Ltd.**

Headquarters  
Avenida Da Praia Grande N 619  
Comercial Si Toi 5 Andar 8, 999078, Macau  
Tel: +853 2835 6320

**Mississippi TanTec Leather, Inc.**

101 TanTec Way,  
Vicksburg, MS 39183, USA  
Tel: +1 601 429 6081

**Saigon TanTec Leather Ltd.**

Lot M2-M3, Viet Huong 2 Industrial Park,  
An Tay Village, Ben Cat District,  
Binh Duong Province, Vietnam  
Tel: +84 274 357 9101/357 9102

**TransAsia TanTec Ltd.**

Lot B6.1, C4, Thanh Thanh Cong IP,  
An Hoi Hamlet, An Hoa Ward, Trang Bang Town,  
Tay Ninh Province, 840000, Vietnam  
Tel: +84 274 357 9101

**Heshan TanTec Leather Co., Ltd.**

No. 1 Xingli Road,  
Hecheng Town, Heshan City,  
Guangdong Province, 529727, China  
Tel: +86 750 831 3280 / 831 3294

**Scamosceria del Brenta srl**

Via Pre' 42,  
36061 Bassano del Grappa (Vicenza), Italy  
Tel: +39 (0) 424 568124 r.a.

Send us an email to [info@tantec1.com](mailto:info@tantec1.com)  
for inquiries.



The Brand  Behind The Brand

---

ISA INDUSTRIAL LTD. [WWW.LITELEATHER.COM](http://WWW.LITELEATHER.COM)  
MACAU (CHINA) | USA | VIETNAM | CHINA | ITALY | HONG KONG (CHINA)

