



The Brand > Behind The Brand



The Brand > Behind The Brand

**Mississippi TanTec Leather, Inc.**

101 TanTec Way,  
Vicksburg, MS 39183, USA  
Tel: +1 601 429 6081  
Fax: +1 601 429 6082

**Saigon TanTec Leather Ltd.**

Lot M2-M3, Viet Huong 2 Industrial Park,  
An Tay Village, Ben Cat District,  
Binh Duong Province, Vietnam  
Tel: +84 274 357 9101/357 9102  
Fax: +84 274 357 9103

**Heshan TanTec Leather Co., Ltd.**

No.3 Industrial Zone,  
Hecheng Town, Heshan City,  
Guangdong Province, 529727, China  
Tel: +86 750 831 3280/831 3294  
Fax: +86 750 831 3288

**Scamosceria del Brenta srl**

Via Pre' 42 - C.P. n. 5,  
36061 Bassano del Grappa (Vicenza), Italy  
Tel: +39 (0) 424 568124 r.a.  
Fax: +39 (0) 424 567093



The Brand > Behind The Brand

ISA INDUSTRIAL LTD. MACAU | USA | VIETNAM | CHINA | ITALY [www.liteleather.com](http://www.liteleather.com)



SS2020 LUXE COLLECTION

SS2020  
LUXE  
COLLECTION

ISA TANTEC



The ISA TanTec LUXE Collection offers classic and fashionable leathers that are suitable for a wide range of products including handbags, wallets, accessories and leather-goods for both men and women.

Our products include various tannages, finishing options, and pricing in order to meet the needs of our customers. Our colors are according to WGSN, and other major fashion forecasting companies to ensure that each collection is in-line with the trend of the season.

Our leathers are developed to meet our customer's physical and chemical requirements. Our in-house certified laboratories conduct tests to ensure quality, and compliance.

### Advantages of Partnering with ISA TanTec

- LITE Concept

ISA LITE index provides water and energy savings rates for every leather or label.

- The Most Advanced RSL System

ISA TanTec works with its partners in the chemical industry to eliminate or significantly reduce the chemicals we believe are potentially problematic in the future from the supply chain, without sacrificing the performance of our leather. This system along with the Restricted Substance List, applies to ALL of its products, for ALL of its customers, at ALL times.

- "A" Rated Traceability

All leathers used in production can be traced to the meat processing facility. ISA TanTec only purchases raw material from LWG Gold Rated suppliers.

- Vertically Integrated Production

ISA TanTec offers our customers standardized solutions for handbag cut parts in order to ensure cost efficiencies, and short lead times.

- Quality and Consistency / Consistency within All Production Locations

Stable material supply base from LWG Gold Rated tanneries, 100% internal finish leather inspection, and control over the entire supply chain.

- Global Manufacturing Footprint (Local Delivery Door to Door)

ISA TanTec is proud to offer 4 production locations USA, Vietnam, China and Italy covering all of the primary global production areas.

## Colors of SS2020



Dandelion



Virtual Pink



Ruby



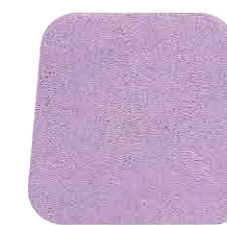
Leather Brown



Fog



Rose Quartz



Amethyst



Blue Topaz



Soldilate Blue



Dark Shadow



Black



# AJAX

*Ajax is a rich looking shiny leather which has been especially developed for handbags. It's slightly milled and spongy, and has a light two tone effect. It's perfect for fashionable and dressier looks. The weight range is 1.0-1.4mm.*

Other Leathers Recommend to Use:

Sonoma

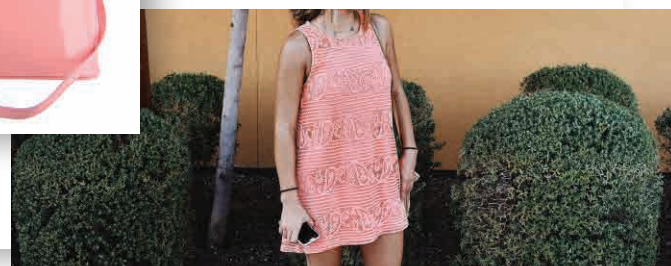
Novello



## Rose Quartz



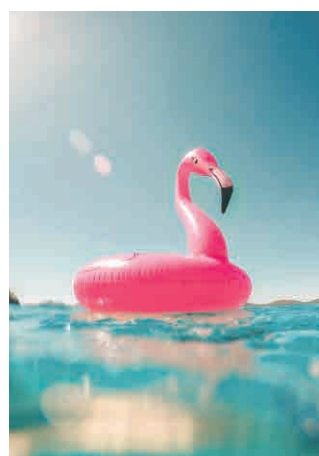
Amethyst



Blue Topaz



Virtual Pink

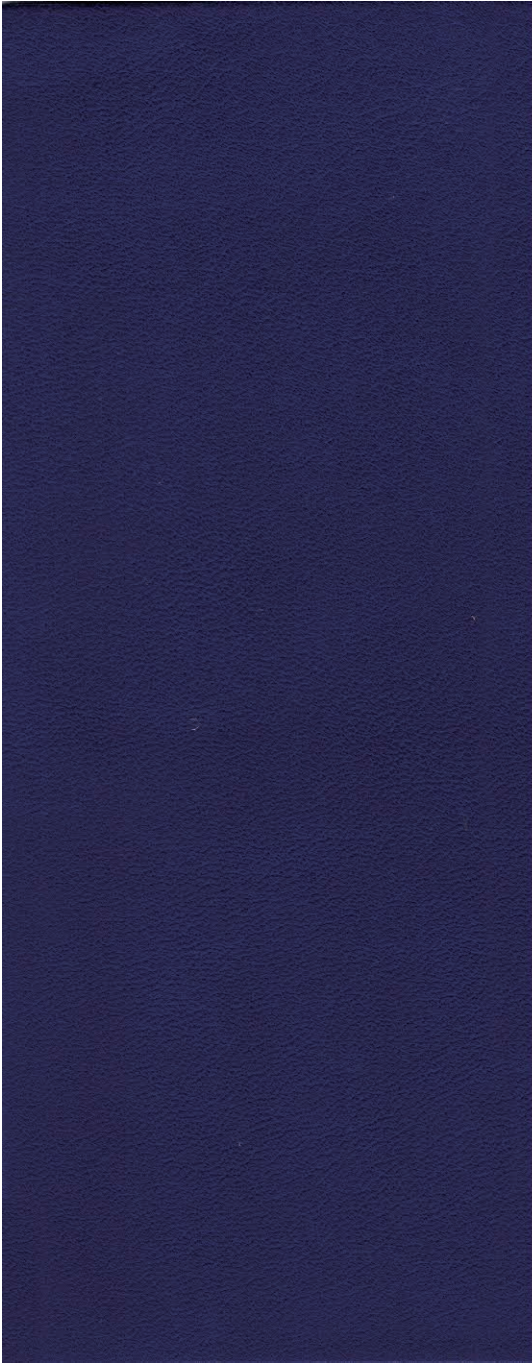


Make in Weights: 1.1-1.3mm



# BELVEDERE

Belvedere has a soft and spongy hand feel with a milled pebble grain surface. Its silky and round body make this leather perfect for products which call for a natural hand feel. The weight range is 1.0-1.2mm.



Soldilate Blue











Dark Shadow



Make in Weights: 1.0-1.2mm

## Other Leathers Recommend to Use:

Champs						
Santorini						
Sonoma						
Kayla						



Black



Ruby





# CIVIS

Civis is a semi vegetable leather with a full and tight tannage. It's even surface will enable the factories to cut this leather well. The weight range is 1.0-1.4mm.



Rose Quartz



Fog

Make in Weights: 1.2-1.4mm

## Other Leathers Recommend to Use:

Champs	   
Giverny	   
Brilliant	    
Kayla	   



Civis



Leather Brown



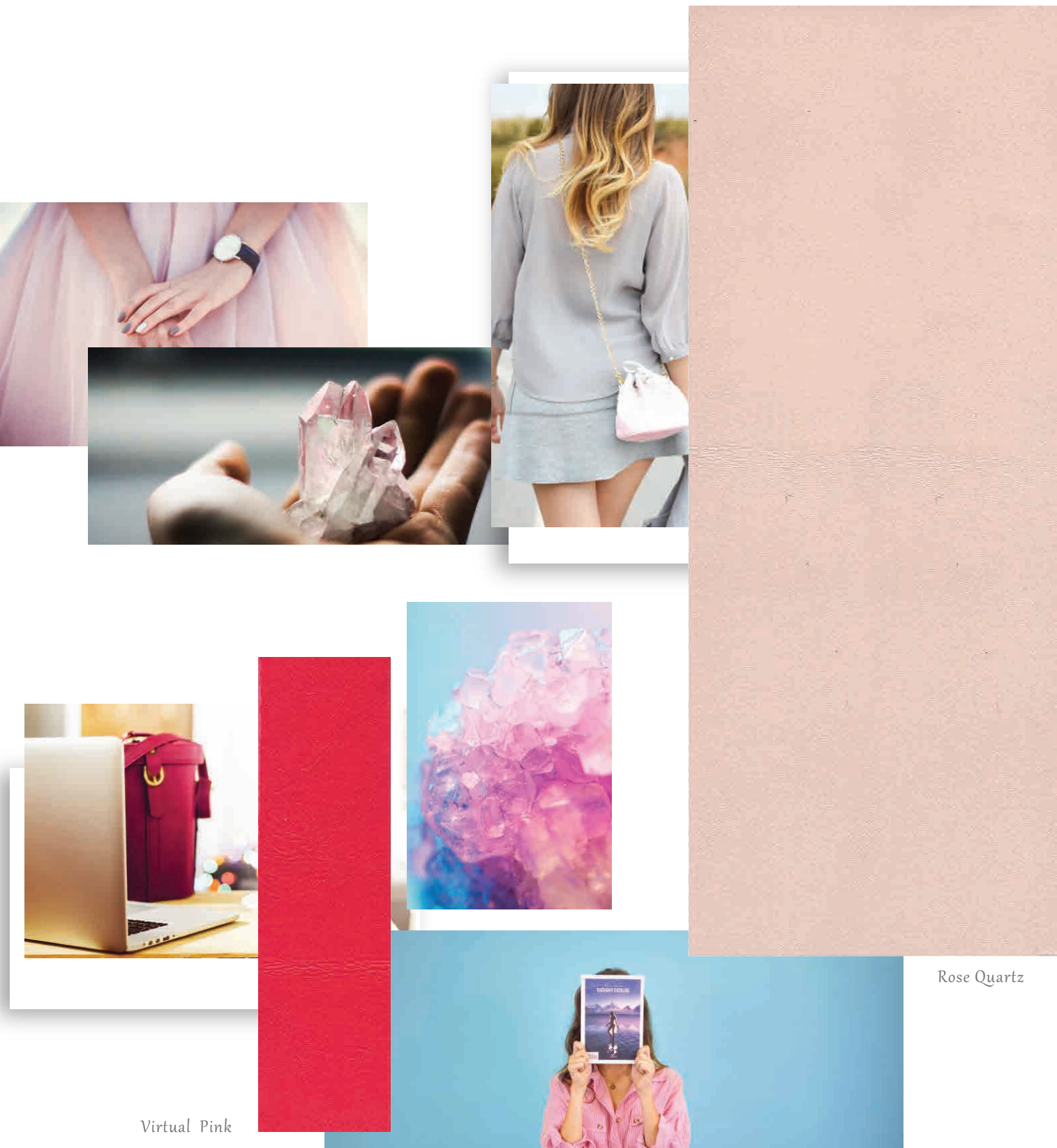
Dandelion





# NOVELLO

Novello has a natural luster and the hand feel of baby calf. It has soft and spongy, and an even surface finish. This is one of our new items with our "new technology" which offers better cutting yields, it is definitely a good article worth to try. The weight range is 1.0-1.4mm.



Make in Weights: 1.1-1.3mm

## Other Leathers Recommend to Use:

Champs	
Sonoma	
Brilliant	
Giverny	



Soldilate Blue





Blue Topaz

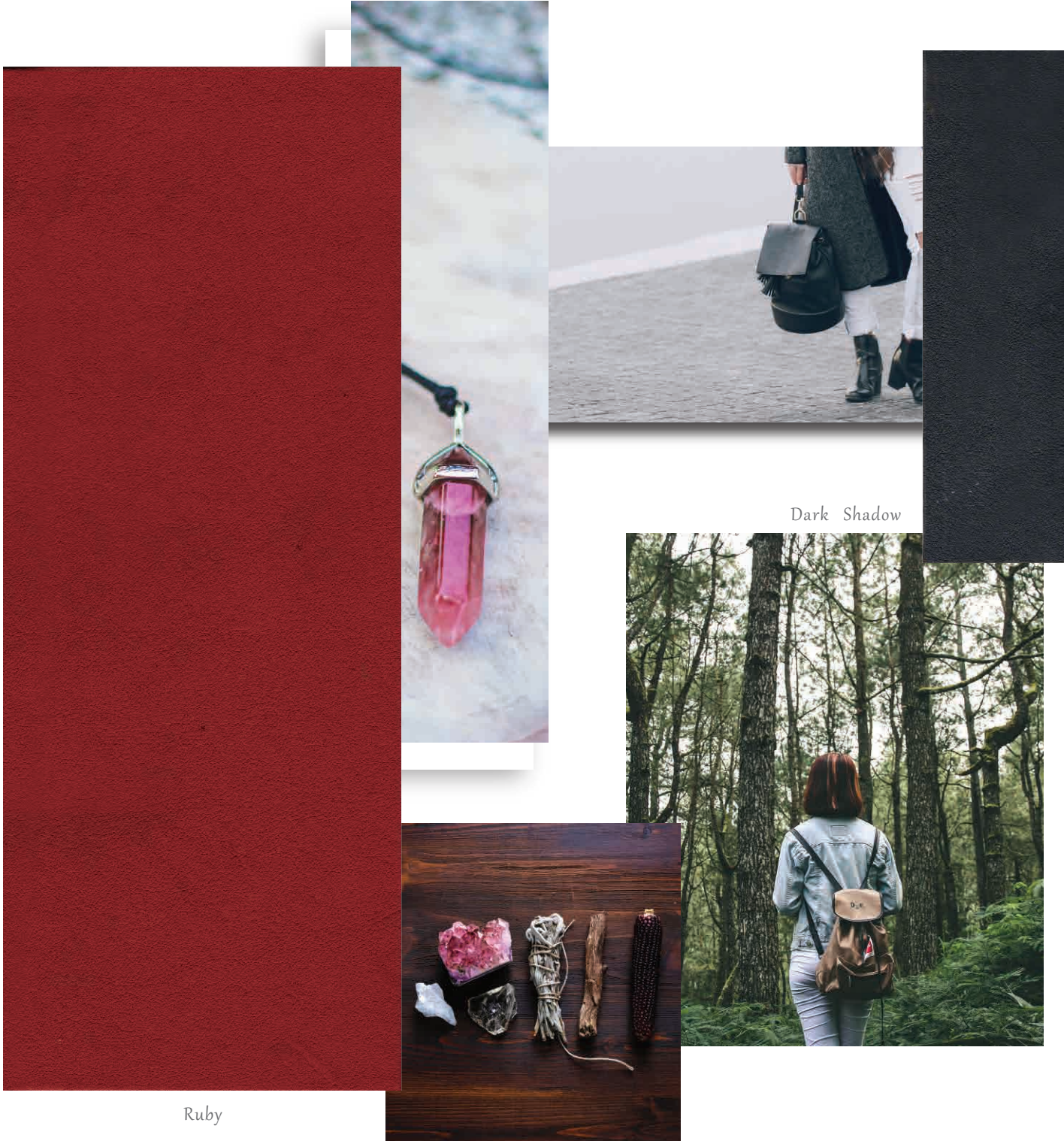


# CHAMPS

Champs gives a unique shrunken and antique look, and the added vegetable extracts gives it a tight, yet soft body. Champs also has a natural luster, and the natural milling helps raise the grain with a WASHED look to make it suitable for all type of bags. The weight range is 1.2-1.6mm.

Other Leathers Recommend to Use:

Sonoma						
Brilliant						
Santorini						



Make in Weights: 1.2-1.4mm





# GIVERNY

One of our classic handbags leathers! It's smooth grain, even surface, and structrured body will help give shape to any type of bag. There are no color limiatations, and the weight range is 1.2-1.6mm.



Virtual Pink

Dandelion

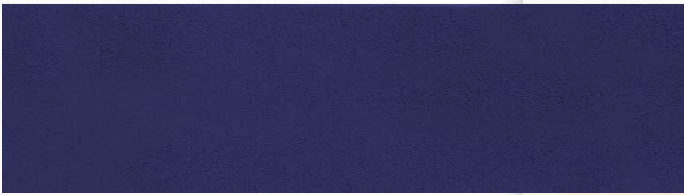
Make in Weights: 1.4-1.6mm

## Other Leathers Recommend to Use:

Champs	
Brilliant	
Kayla	
Civis	



Rose Quartz



Soldilate Blue





# SANTORINI

Santorini is a spongy type embossed leather with a rich semi vegetable extract tanned into the leather. It has a beautiful small pebble texture, and a luxurious round body. The weight tange is 1.0-1.6mm.



Fog



Amethyst



Blue Topaz

Make in Weights: 1.3-1.5mm

## Other Leathers Recommend to Use:

Champs	   
Giverny	   
Brilliant	    
Sonoma	   
Kayla	   
Civis	   





Ruby



Soldilate Blue



Dandelion



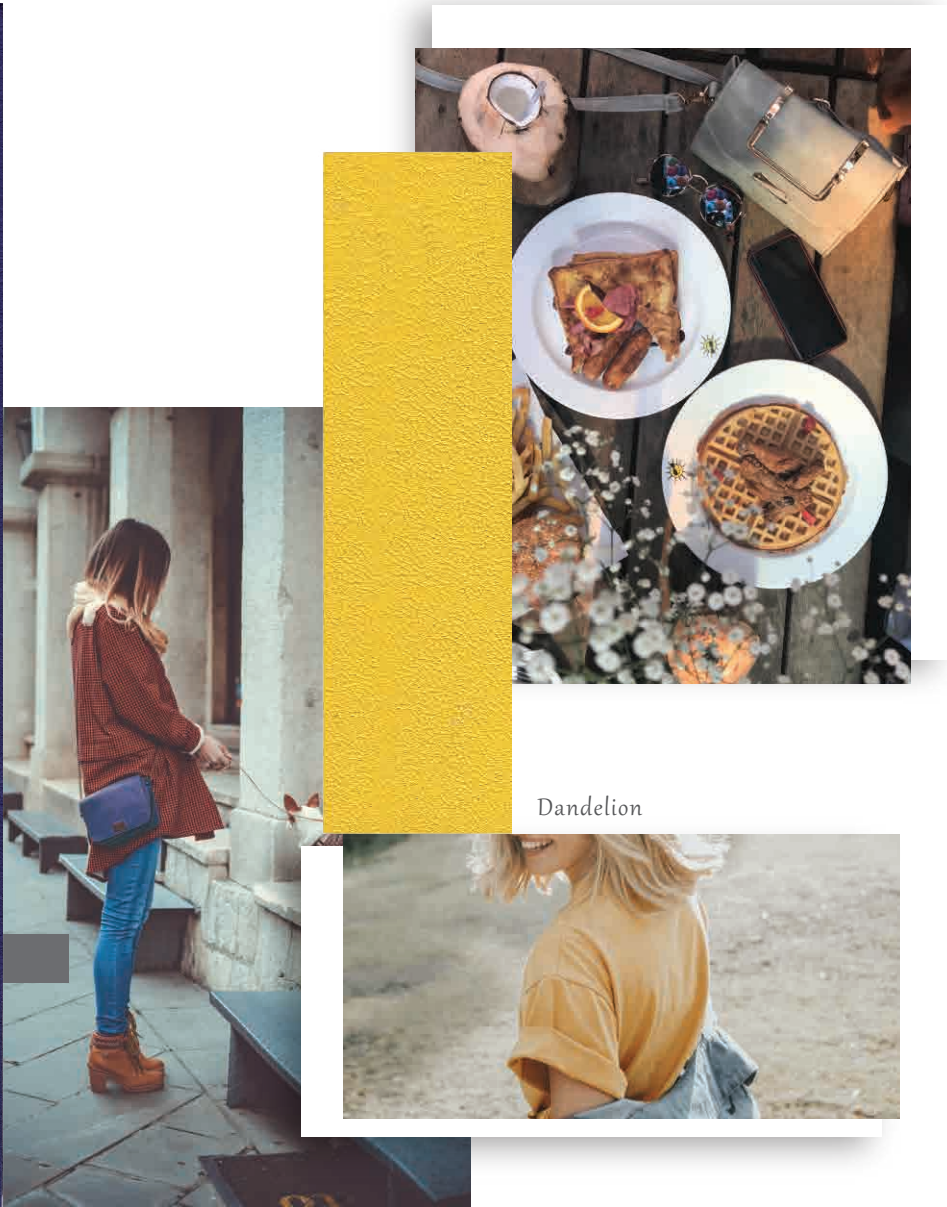


# SONOMA

Sonoma is our best handbag classic nappa leather. If your styles call for a soft, milled leather, with a nice soft touch, then this is it! The weight range is 1.0-1.4mm.



Soldilate Blue



Dandelion



Make in Weights: 1.2-1.4mm

## Other Leathers Recommend to Use:

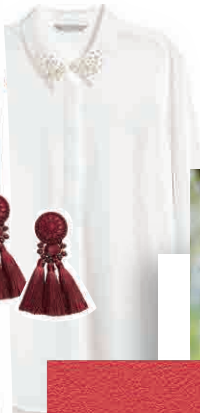
	Champs						
	Santorini						
	Giverny						
	Brilliant						
	Kayla						
	Civis						



Black



Virtual Pink





# BRILLIANT

Metallic looks are always in fashion. We are all drenched with "bling" in fancy colors, so this leather is perfect to pair with the hardware and "bling" that the consumers are seeking. The weight range is 1.0-1.4mm.



28.25 Gallons  
of Water Saved



921.81 Lighting  
Hours Saved

\*Check Appendix 1 for environmental factors of this article.



Rose Quartz



Dandelio



Make in Weights: 1.2-1.4mm



Other Leathers Recommend to Use:

Champs



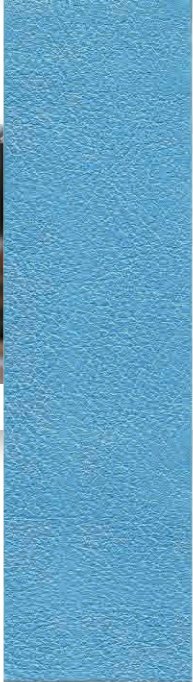
Sonoma



Kayla



Leather Brown



Blue Topaz



Soldilate Blue



LOW IMPACT TO THE ENVIRONMENT

Brilliant



# KAYLA

Kayla is one of our best LITE handbags leathers. It's naturally milled and has an even mini pebble look. Kayla's rich leather body and surface character make this leather good for both distressed and casual looks. The weight range is 1.2-1.6mm.



28.13 Gallons  
of Water Saved



968.35 Lighting  
Hours Saved

\*Check Appendix 1 for environmental factors of this article.

## Other Leathers Recommend to Use:

Champs	
Santorini	
Giverny	
Brilliant	
Sonoma	
Civis	



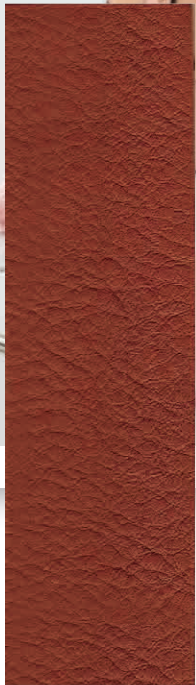
Ruby

Make in Weights: 1.4-1.6mm



Fog

Soldilate Blue



Leather Brown



LITE

LOW IMPACT TO THE ENVIRONMENT



# CRUISE 83

Cruise 83 is an ISA Classic! It's a great trim leather, but it could also be finished and burnished to create worn and vintage looks. The weight range is 1.0-2.2mm.



30.27 Gallons  
of Water Saved



1023.91 Lighting  
Hours Saved

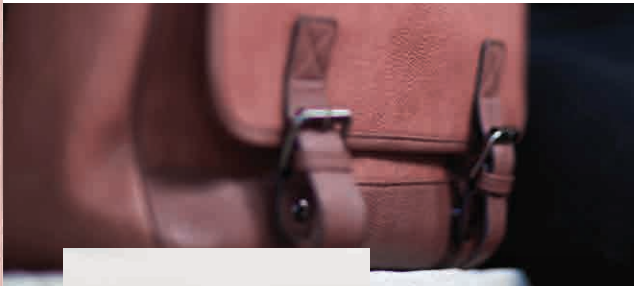
\*Check Appendix 1 for environmental factors of this article.

Other Leather Recommend to Use:

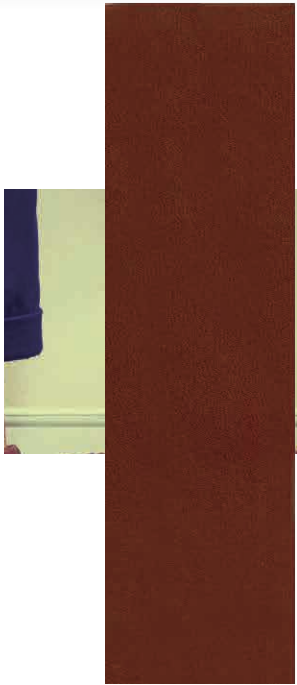
El Porvenir



Rose Quartz



Black



Leather Brown



Make in Weights: 1.4-1.6mm



LOW IMPACT TO THE ENVIRONMENT



# EL PORVENIR

El Porvenir is a semi-veg retanned leather. It has a tight and firm tannage, and it can be polished and burnished. It's the perfect choice for all trims and straps. The weight range is 1.0-2.2mm.



30.27 Gallons  
of Water Saved



1035.74 Lighting  
Hours Saved

\*Check Appendix 1 for environmental factors of this article.

## Other Leather Recommend to Use:

Cruise83



Black



Leather Brown

Make in Weights: 1.4-1.6mm



LOW IMPACT TO THE ENVIRONMENT





As a tannery, ISA TanTec is committed to conserve the environment and resources. Sustainability is an important part of ISA’s identity. In 2003, ISA TanTec developed the LITE (Low Impact To the Environment) concept which defines a high standard of environmental sustainability in the manufacturing process.

LITE Features

	<b>Bamboo Wall</b> Our bamboo walls not only provide comfortable, natural ventilation for our employees, but they also save energy by limiting the need for fans on the production floors.
	<b>Solar System</b> Our solar system is used to heat production water in the replacement of traditional heating sources such as diesel oil.
	<b>Rain Lagoon</b> Our lagoon collects 27,300 tons of rainwater per year that is used for both production and greenery.
	<b>Wind Energy</b> Rainwater is pumped from our lagoon into production by wind power. This saves 5,189 kwh and reduces 4,006 kg of CO2 emission per year.
	<b>Natural Light</b> Green Building technology has been adopted in our tannery to reduce energy consumption. We have opaque light panels in our ceilings, maximizing the use of natural light during the day.
	<b>Wetland</b> Our constructed wetlands system is set up with an automated control of water levels, allowing a natural purification process without generating emissions. It creates a biomass fuel and helps us in reducing our carbon footprint by 245kwh/year/sqm or CO2 189kgs/year/sqm.

Appendix 1

Environmental Impact

Compare the energy and water savings of ISA products when choosing leathers for adoption. The choice you make can positively influence the impact to the environment!

Article	HRS saved for lighting a 11W lamp	US gallons of water saved
Brilliant	921.81	28.25
Kayla	968.35	28.13
Cruise 83	1023.91	30.27
El Porvenir	1035.74	30.27

The numbers are showing the lighting hours and water an article will save to make one bag (8,5 sqft of leather), comparing to the LWG Pass Score (50%) of 6.72 Mj/m2 for energy consumption and 178L/m2 for water consumption.

LWG (Leather Working Group), a multi-stakeholder group, develops and maintains a protocol that assesses the compliance and environmental performance of tanners, promotes and appreciates environmental business practices within the leather industry.



Together We Save!





Contact us

**Keith Hill**  
Senior VP of Sales  
E: keith@tantec1.com M: +86-186-8833-3390

**Matthew Feuer**  
US Sales  
E: matt@tantec1.com M: +1-203-505-2074

**Stephanie Cadiat**  
European Sales  
E: stephanie@tantec1.com M: +49-172-432-8074

**Sophyia Zhu**  
G.M. of ISA Luxury Leather  
E: sophyia@tantec1.com M: +86-138-2706-8661

**Daisy Feng**  
Sales Representative  
E: daisy@tantec1.com M: +86-138-2706-2551

**Shawn Chen**  
Sales Representative  
E: shawn@tantec1.com M: +86-137-5154-8600

