

Mississippi TanTec Leather, Inc.

101 TanTec Way,
Vicksburg, MS 39183, USA
Tel: +1 601 429 6081

Saigon TanTec Leather Ltd.

Lot M2-M3, Viet Huong 2 Industrial Park,
An Tay Village, Ben Cat District,
Binh Duong Province, Vietnam
Tel: +84 274 357 9101/357 9102

Heshan TanTec Leather Co., Ltd.

No. 1 Xingli Road,
Hecheng Town, Heshan City,
Guangdong Province, 529727, China
Tel: +86 750 831 3280 / 831 3294

Scamosceria del Brenta srl

Via Pre' 42,
36061 Bassano del Grappa (Vicenza), Italy
Tel: +39 (0) 424 568124 r.a.

Send us an email to info@tantec1.com
for inquiries.



The Brand > Behind The Brand

ISA INDUSTRIAL LTD. WWW.LITELEATHER.COM
MACAU (CHINA) | USA | VIETNAM | CHINA | ITALY | HONG KONG (CHINA)



The Brand > Behind The Brand



SS 2021 LUXE COLLECTION



The Brand > Behind The Brand

SS 2021 LUXE COLLECTION





The ISA TanTec LUXE Collection offers classic and fashionable leathers that are suitable for a wide range of products including handbags, wallets, accessories and leather-goods for both men and women.

Our products include various tannages, finishing options and pricing in order to meet the needs of our customers. Our colors are according to WGSN and other major fashion forecasting companies to insure each collection is in-line with the trends of the season.

Our leathers are developed to meet our customer's physical requirements. Our in house SATRA certified laboratories conduct extensive testing always insuring quality and compliance.

Advantages of Partnering with ISA TanTec

Dedicated Sustainable Handbag Leather Production

All our leathers are produced in sustainable LWG Gold and Silver rated tanneries.

Member of Sustainable Apparel Coalition

ISA TanTec is the member of Sustainable Apparel Coalition (SAC).

Traceability to the Meat Processing Facility

All leathers used in production can be traced back to the meat processing facility. ISA TanTec only purchases from LWG rated suppliers.

Complete RSL Compliance

ISA TanTec eliminates or significantly reduces chemicals according to the most advanced Restricted Substance List. Without sacrificing the performance of our leathers, these chemicals, which could be potentially problematic, are removed from all products, for all customers, all the time.

Specialized Handbag Leather Types

Experienced Korean technicians specializing in genuine handbag leather types.

Highest Level of Quality and Consistency

ISA TanTec offers a stable material supply chain from LWG Gold and Silver rated tanneries and 100% finished leather inspection and grading.

Global Manufacturing Footprint

ISA TanTec is proud to offer 4 production locations in USA, Vietnam, China and Italy, as well as an exclusive LWG Silver rated partner in Thailand, covering primary handbag production locations.

Worldwide Sales Service and Support

ISA TanTec offers efficient local sales service to support and fulfill our customers' needs.



The Brand > Behind The Brand

Spring Summer 2021 Color Palette



Rose of Sharon



Oxy Fire



Blood Orange



Gold



Bell Pepper



Natural



Sago



Dior Moon



Morning Dove



Mustang



Greece Olive



Van Gogh's Iris



Italian Plum



Black



Aqua



Spearmint

SONOMA

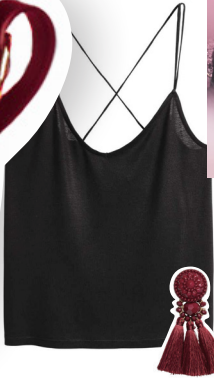
Sonoma is our best classic nappa leather for handbags. If styles call for a soft, milled leather and a spectacular touch, Sonoma is it! The available weight range is 1.2-1.4mm



Morning Dove



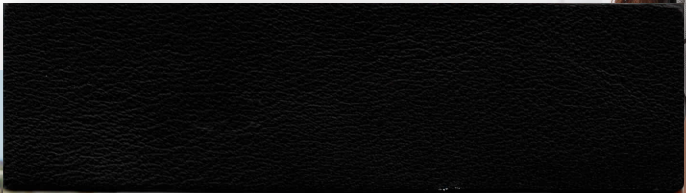
Spearmint



Rose of Sharon



Bell Pepper

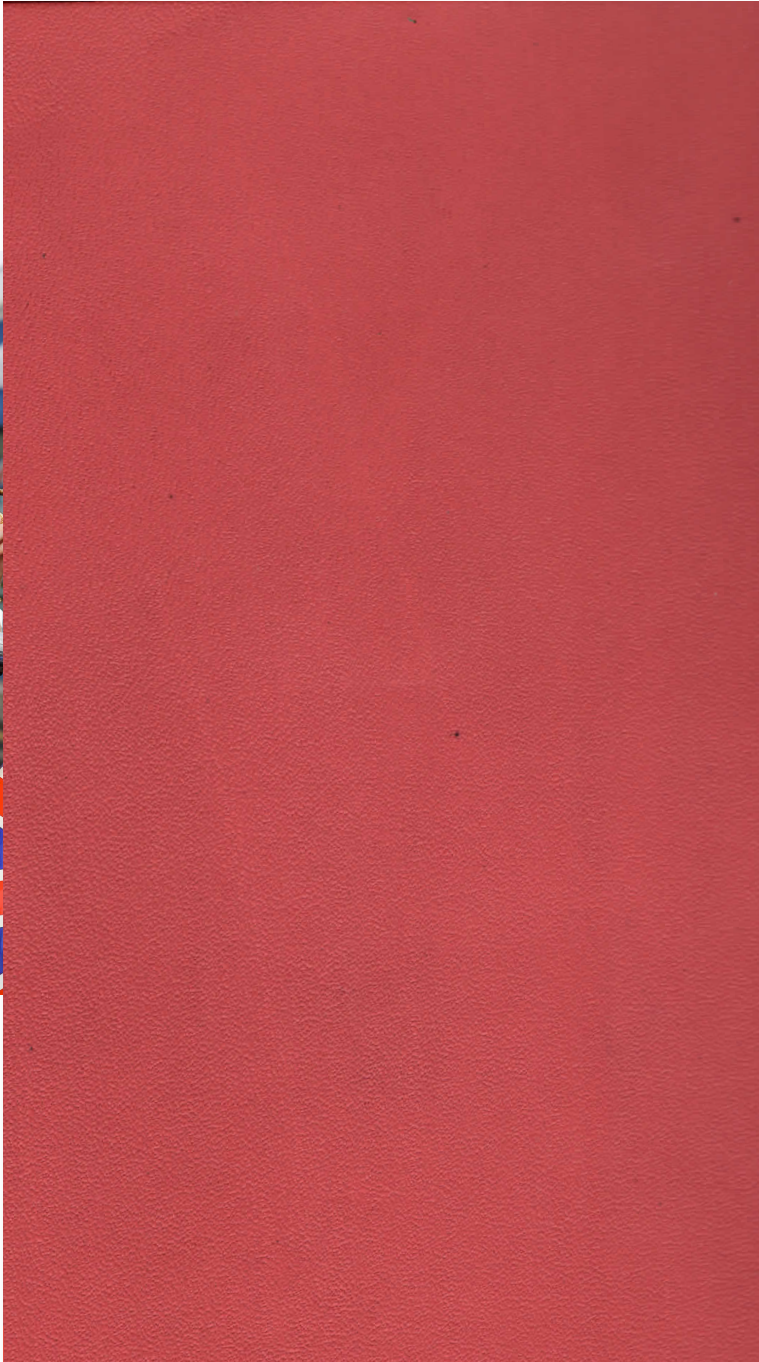
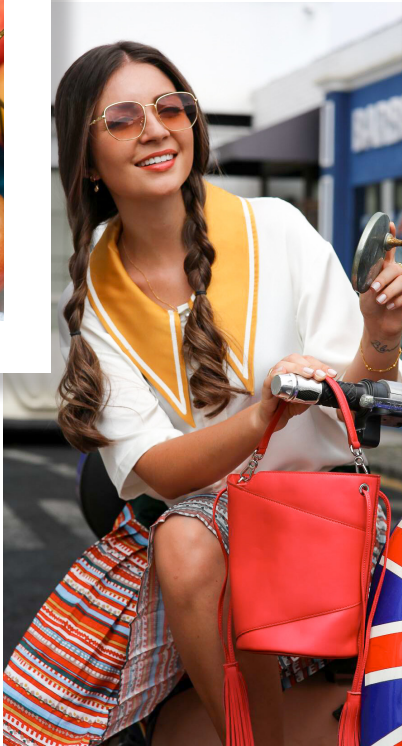


Black



GIVERNY

One of our classic handbag leathers! Its smooth grain, even surface, and structured body will help give shape to any type of bag. There are no color limitations and the available weight range is 1.4-1.6mm.



Oxy Fire



Black



Aqua



Italian Plum



SANTORINI

Santorini has a spongy feel with a distinctive emboss. With rich semi vegetable extracts tanned into the leather, it has a luxurious round body and small pebble texture. The available weight range is 1.3-1.5mm



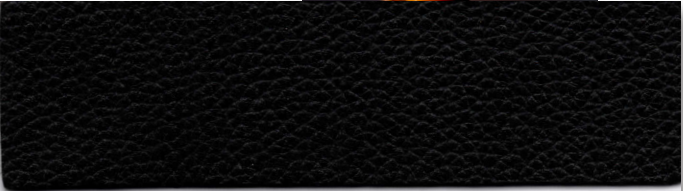
Gold



Sago



Blood Orange

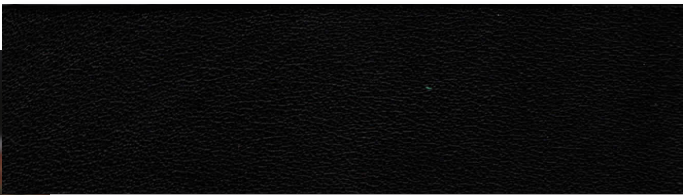


Black



AMBROSIA

Our best naturally milled semi-veg leather! Ambrosia has soft, round and spongy body which gives life to any bag. The naturally milled pebble promotes a classic lifestyle look. The available weight range is 1.4-1.6mm.



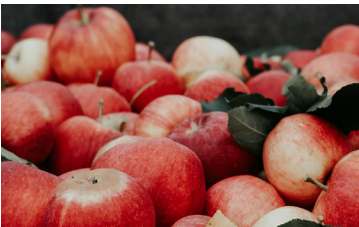
Black



Mustang



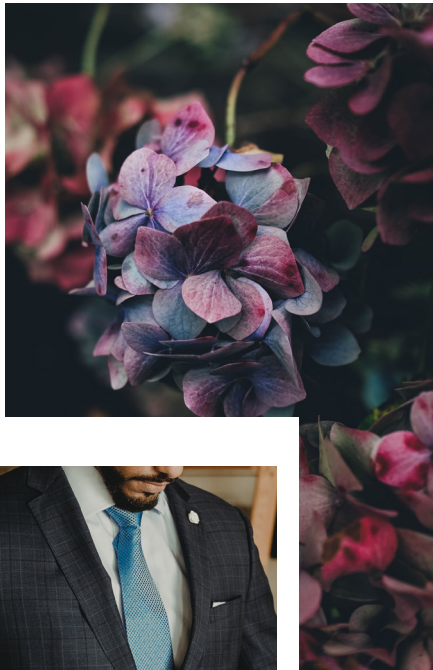
Morning Dove



Rose of Sharon

COMO

Historical vintage looking leather with a slightly oiled and waxed surface. Creating an antique look, Como is the perfect choice for both Men's & Women's collections, colors are available for medium to dark range. The available weight range is 1.2-1.4mm.



Van Gogh's Iris



Greece Olive



Mustang



VENETO

This linear texture works well for both Men's and Women's. Veneto is perfect for Spring with its soft and spongy body and linen appearance. The available weight range is 1.2-1.4mm.



Natural



Morning Dove

Black

ONICE SOFT

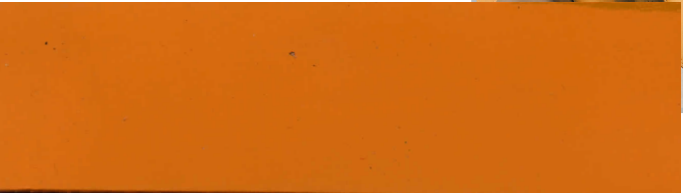
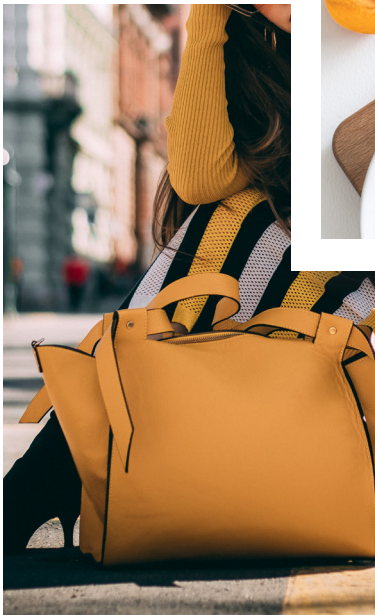
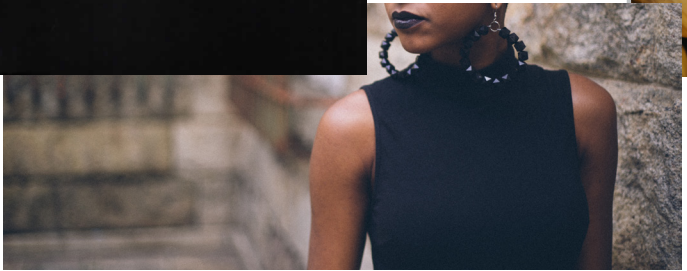
Rubberized looks are trending! The soft, round body with rubbery hand feeling will be in high demand for travel bags and casual lifestyle leather goods. The available weight range is 1.0-2.2mm



Dior Moon



Black



Bell Pepper

CRUISE 83

Cruise 83 is an ISA Classic! It's a great trim leather, which can also be finished and burnished to create worn and vintage looks. The available weight range is 1.0-2.2mm.



Natural



Black



Contact us

Pascale Tahlaiti
Vice President of Sales Luxury & TrimTec
E: pascalea@tantec1.com **M:** +86 138 2802 2253

Matthew Feuer
US Sales
E: matt@tantec1.com **M:** +1-203-505-2074

Shannon Brozyna
Account Manager
E: shannon@tantec1.com **M:**+1-207-570-8933

Steffen Weih
European Sales Manager
E: steffen@tantec1.com **M:** +49-170-527-7700

Shawn Chen
Sales Representative
E: shawn@tantec1.com **M:** +86-137-5154-8600

