



The Brand > Behind The Brand

ISA TanTec
Sustainable



Trims



Under one tannery roof, ISA TanTec also operates a leather trimming division, ISA TrimTec, which specializes in trims for apparel, bags and shoes. ISA TrimTec offers customized technology options including debossing, embossing, foiling and printing as well as special finishing. ISA TrimTec strives for value by adding to the supply chain in terms of manufacturing diversity, cost efficiencies, fast delivery and risk free RSL performance.

Advantages of Partnering with TrimTec

- LITE Concept

ISA LITE index provide water and energy savings rates for every leather or label.

- The Most Advanced RSL System

ISA TanTec works with its partners in the chemical industry to eliminate or significantly reduce the chemicals we believe are potentially problematic in the future from the supply chain, without sacrificing the performance of our leather. This system along with the Restricted Substance List, applies to ALL of its products, for ALL of its customers, at ALL times.

- Top Rated Traceability to The Meat Processing Facility

All leathers used in label production can be traced to the meat processing facility. ISA TanTec only purchases raw material from LWG Gold rated tanneries.

- Quality and Consistency / Consistency within All Production Locations

Stable material supply base from LWG Gold rated tanneries, 100% internal finish label inspection, and control over the entire supply chain.

- Global Manufacturing Footprint (Local Delivery Door to Door)

3 production locations include the USA, Vietnam and China covering all main global production areas.

- Vertically Integrated Production

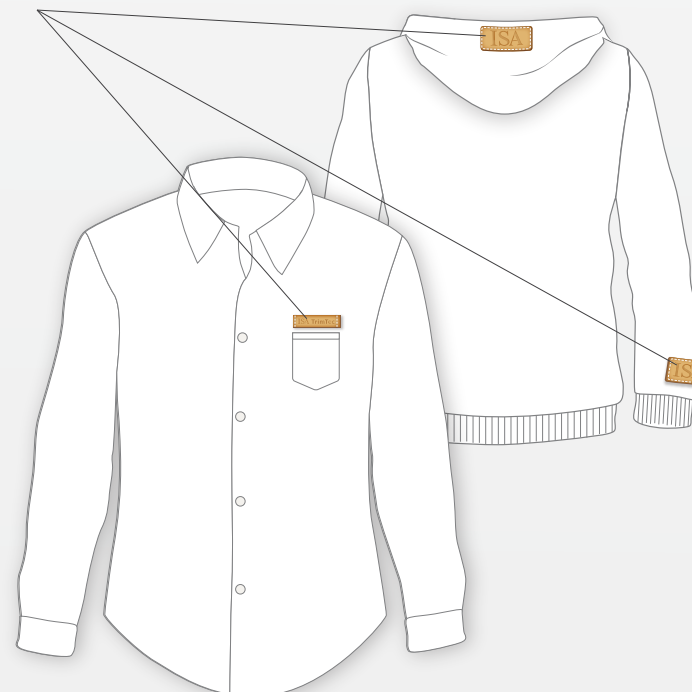
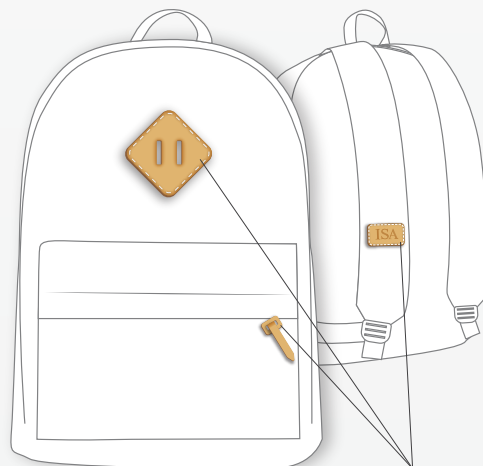
Producing labels full cycle from wet blue to the finished label ensuring a high rate of label and leather availability.

- Global Brand Base

Clients are famous brands worldwide.

- Multi-Level Selling

ISA TanTec works with all types of companies include international brands, trading companies and direct garment manufacturers.

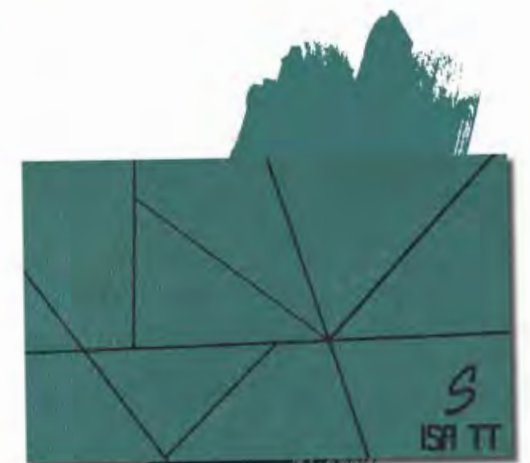


Certificates

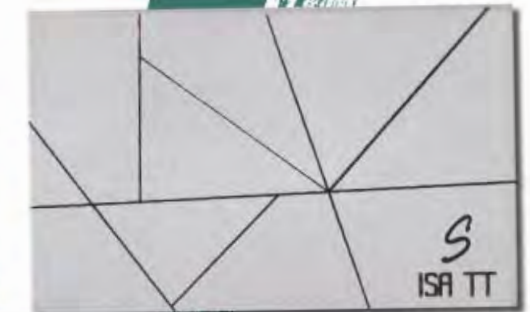
OEKO-TEX®
CONFIDENCE IN LEATHER
LEATHER STANDARD 
BJ041 132169 TESTEX
Leather goods tested for harmful substances.
www.oeko-tex.com/leatherstandard



Leather Core Collection



R26353



R26349





R26177



R26183



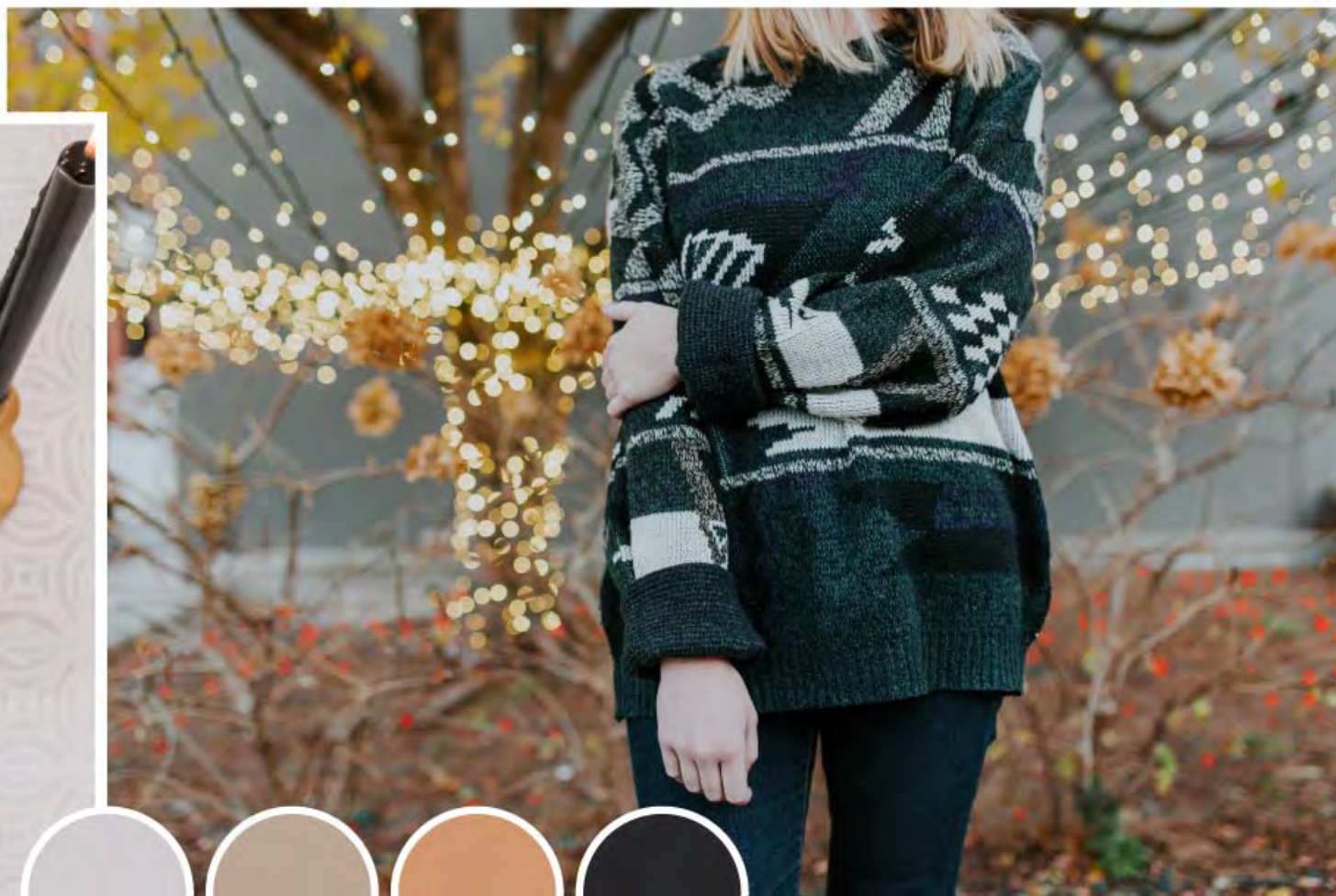
R26184

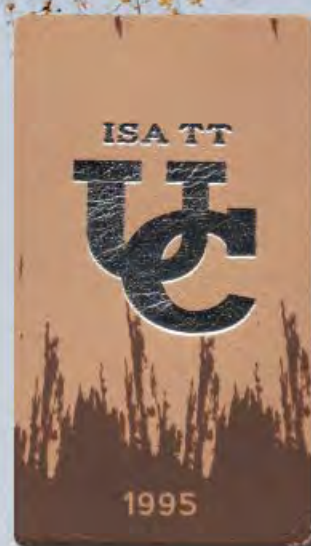


R26165



R26164





R26157



R26150



R26419



R26175



R26185



R26155



R26359



R26156



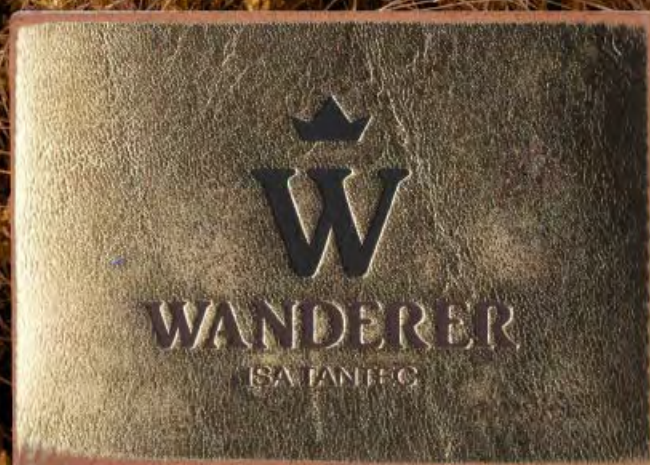
R26154



R26362



R26361



R26358



R26420



R26152



R26153





R26182



R26181



R26180



R26167





R26722



R26352



R26259



R26356



R26368



R26365





R26158



R26168



R26170



R26159





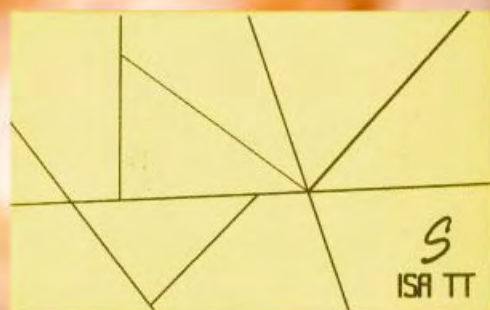
R26355



R26723



R26354



R26357



R26351

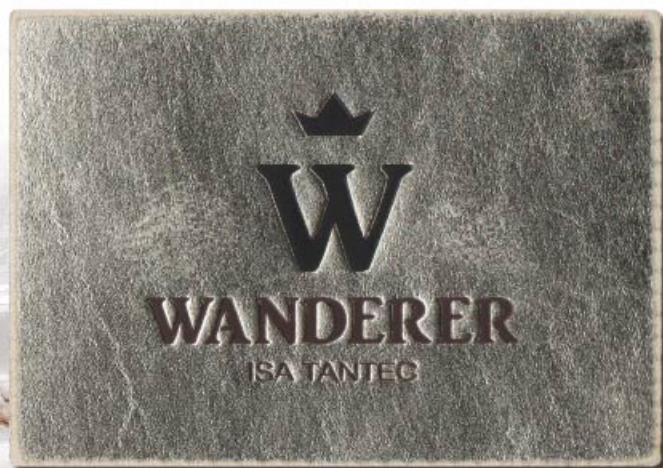




R26366



R26369



R26360



R26363





R26178



R26176



R26421



R26422





R26364



R26367

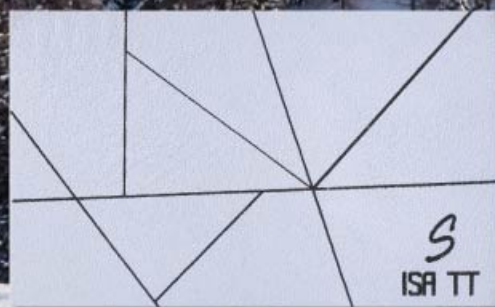


R26186



R26372

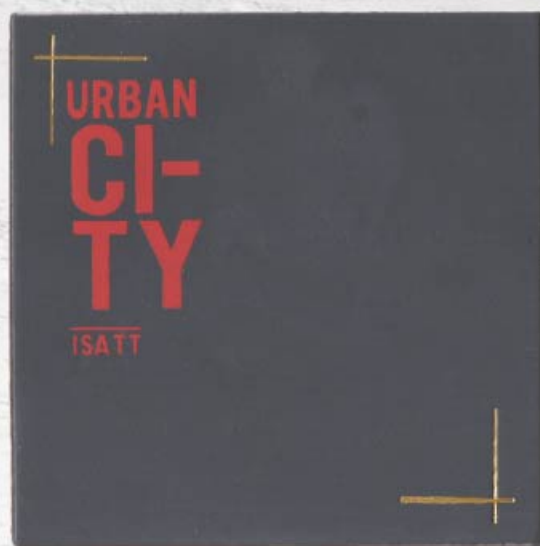




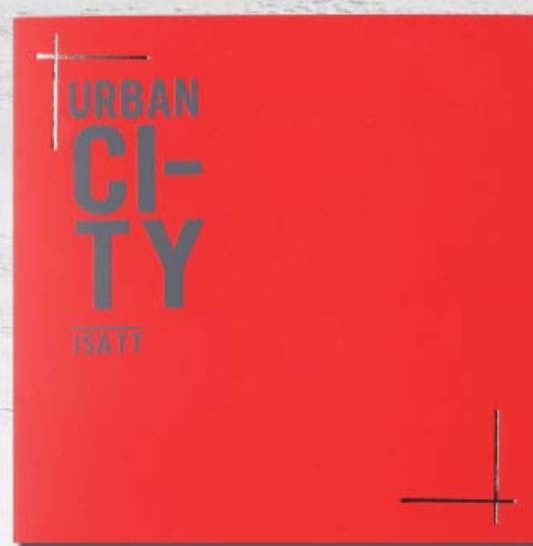
R26350



R26151



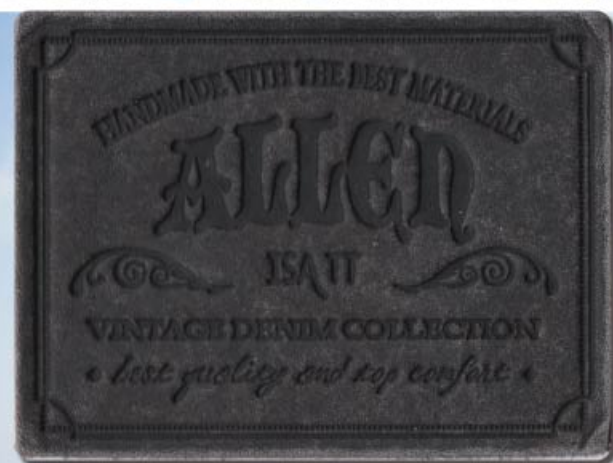
R26375



R26374



R26373



R26166





R26163



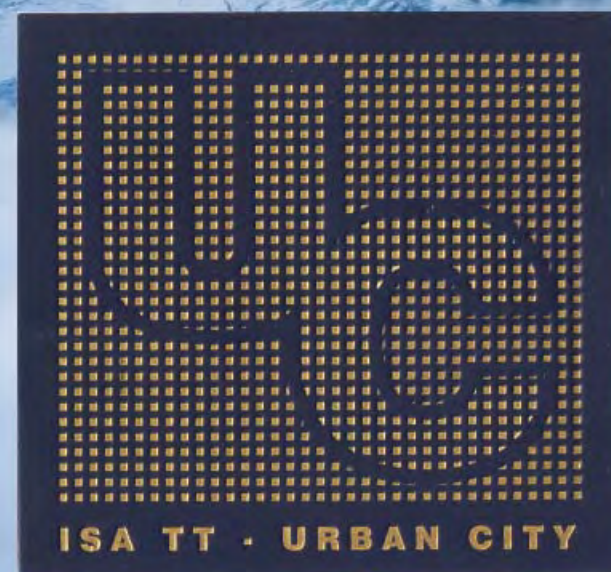
R26160



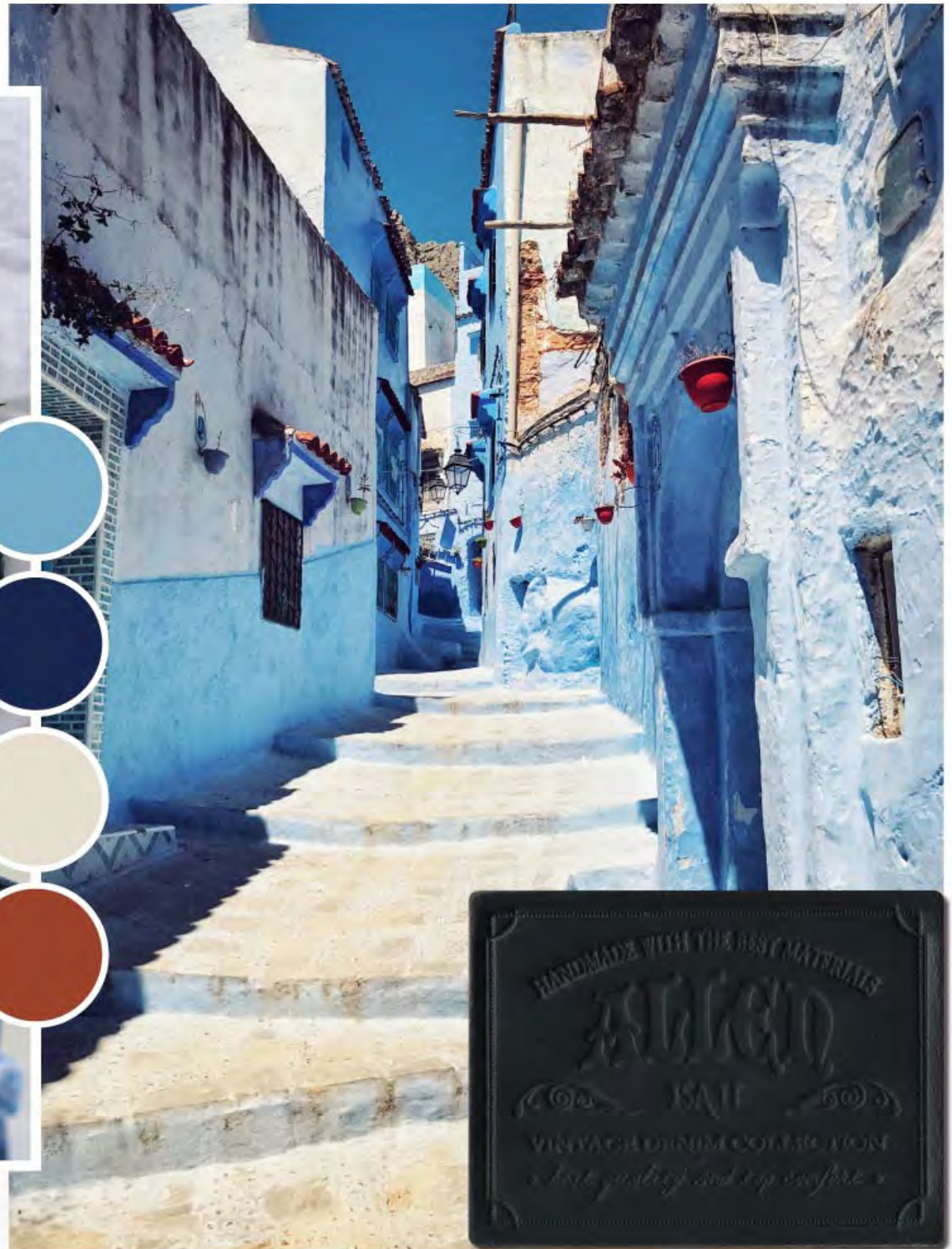
R26370



R26179



R26371



R26171



R26173



R26174



R26172



R26162

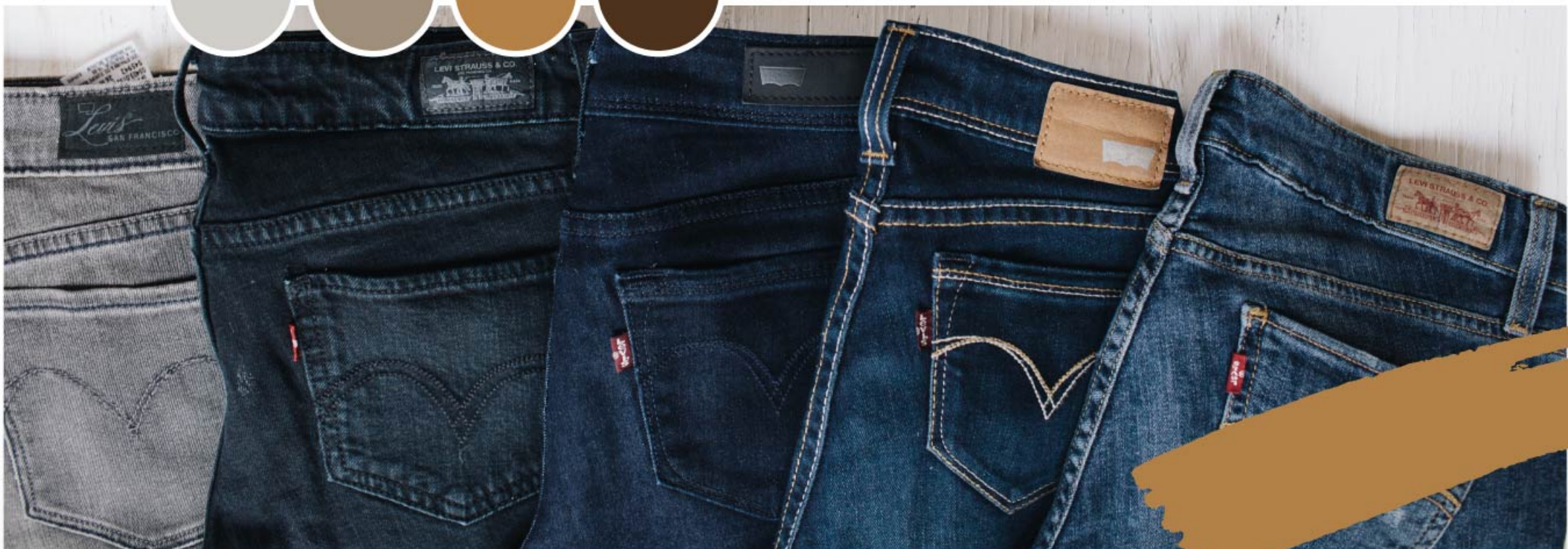


R26169

Chrome Free Leather Collection



- Chrome Free material
- Best match to Veg tanned leather but better performance on color fastness & shrinkage
- More color options possible
- Processed under LWG awarded tanneries & OEKO-TEX certified label facilities
- Designed and monitored with LITE branded technology





R26660



R26657



R26659



R26661



R26658



R26656



Jacron Collection





R26382



R26135



R26418



R26378



R26144



R26146



R26145



R26143





R26417



R26142



R26149



R26140



R26147



Denim master
Sep 17





R26148



R26141



R26724



R26136



R26381





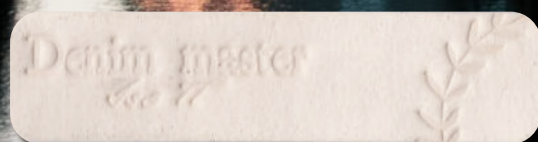
R26376



R26377



R26139



R26138



R26379

RECOVER

Bonded Leather Collection



Produced by recycling and processing tannery's Wet Blue shaving mixed with water, natural Latex and oils, Bonded Leather is an excellent support which becomes, thanks to its many features both technical and aesthetic, the ideal material for production of Labels and many other accessories.

The smell of Leather, the consistent texture and the variety of colors and finishing will make it an additional and attractive "Must" in your collections.

Due to its Eco-Friendly nature, this recycled material is in full compliance with Environment.



R26718



R26717



R26719





R26721



R26716



R26715

Contact us

Pascale Tahlaiti
Vice President of Sales Luxury & TrimTec
E: pascale@tantec1.com

M: +86 138 2802 2253

Moon Pham
TrimTec Sales Manager (VN)
E: moon@tantec1.com

M: + 84 974 150 589



ISA TanTec Ltd.

Headquarters
Avenida Da Praia Grande N 619
Comercial Si Toi 5 Andar 8, 999078, Macau
Tel: +853 2835 6320

Mississippi TanTec Leather, Inc.

101 TanTec Way,
Vicksburg, MS 39183, USA
Tel: +1 601 429 6081

Saigon TanTec Leather Ltd.

Lot M2-M3, Viet Huong 2 Industrial Park,
An Tay Village, Ben Cat District,
Binh Duong Province, Vietnam
Tel: +84 274 357 9101/357 9102

TransAsia TanTec Ltd.

Lot B6.1, C4, Thanh Thanh Cong IP,
An Hoi Hamlet, An Hoa Ward, Trang Bang Town,
Tay Ninh Province, 840000, Vietnam
Tel: +84 274 357 9101

Heshan TanTec Leather Co., Ltd.

No. 1 Xingli Road,
Hecheng Town, Heshan City,
Guangdong Province, 529727, China
Tel: +86 750 831 3280 / 831 3294

Send us an email to ***info@tantec1.com***
for inquiries.



The Brand < Behind The Brand

ISA INDUSTRIAL LTD. WWW.LITELEATHER.COM
MACAU (CHINA) | USA | VIETNAM | CHINA | HONG KONG (CHINA)

