

Want a Sustainable Alternative to Plastics?

The Future is Now



COSM™

AHEAD OF THE CURVE



Our DNA

Sustainability and responsible manufacturing processes have been at the core of our business model since LITE's inception in 2003. We built on this foundation with a separate business unit, COSM, to further explore biobased materials. COSM focuses on the development and production of new and sustainable plant based materials.

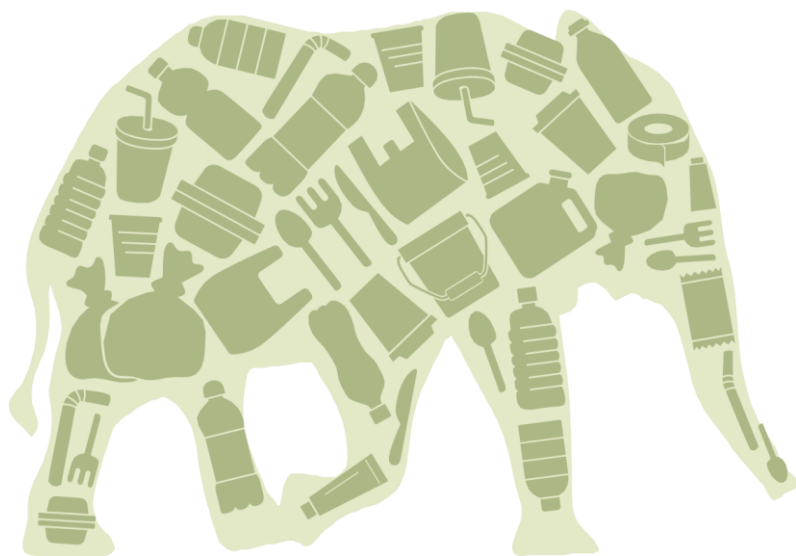
Our Commitment

- Utilize plant based materials which are biodegradable
- Ability to replace petrochemical based synthetics
- Production of COSM materials with circularity in mind

The Benefits

- Up to 100% bio content which meets the necessary specs for footwear
- Fully scaled in production in a wide range of color and weight options
- Existing sales service infrastructure set up to aid both brands and factories
- Established, long-term factory relationships
- Pricing structure that is achievable and attractive for large scale projects

The Elephant in the Room



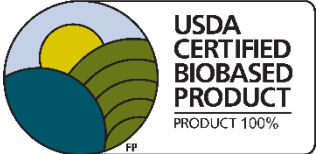
The term “Vegan Leather” has increased in popularity. Many of these materials are advertised as environmentally friendly, however, contain plastics. In contrast to genuine leather, vegan leather is one of the biggest threats to our planet. As an alternative to petrobased vegan leathers, our COSM materials offer another option to materials that can cause harm to our ecosystem.



- USDA Certified Biobased**

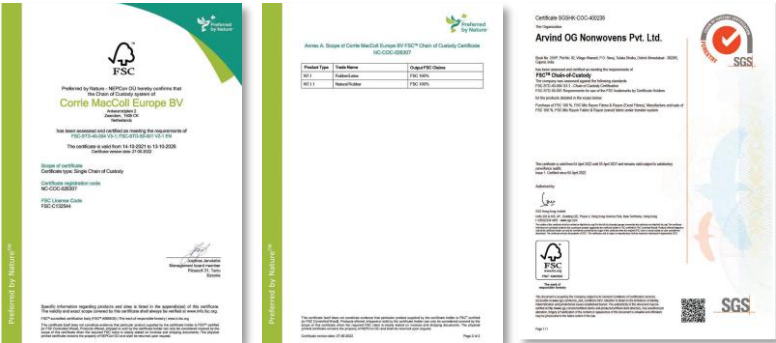
The plant based components in our COSM materials are completely natural and allow the product to be classified as bio-based. The biobased content has been 3rd party certified by the USDA.

**biobased content varies by article*



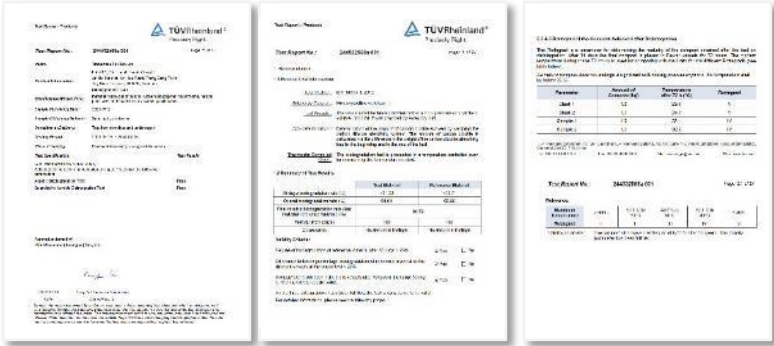
- FSC/IFSC Certified**

All natural rubber, pulp & fiber units are Forest Stewardship Council certified with leading sustainable forestry practices stressing responsible sourcing of raw material from forests.



*Certification Deck available upon request

- Biodegradable and Compostable**
 All natural components of our COSM Materials have been carefully selected in order to achieve biodegradability.



- Regenerative**
 The regenerated cellulosic fibers are certified according to Oeko-Tex and TUV Austria OK scheme for biodegradability in soil, water and marine environments.



*Certification Deck available upon request



HyphaLite Neo

HyphaLite Neo is a 100 % biobased material made from certified natural latex, FSC-certified regenerated cellulose fibers and contains mushrooms.

ISA engineered these components to optimize HyphaLite to meet the physical properties required by the footwear and accessories industry such as hand feel, softness, durability, breathability, and most important cost.

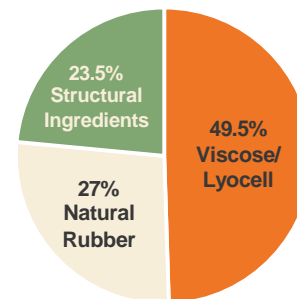
Bio Content: **100%**

Thickness: **0.4 - 2.2mm***

Colors: **HyphaLite Neo Color Palette**

Treatments: **Smooth, Milled, Embossed, Spray, Antique, 2TN, Pearl**

*Embossed version available in 0.9 - 2.2mm only

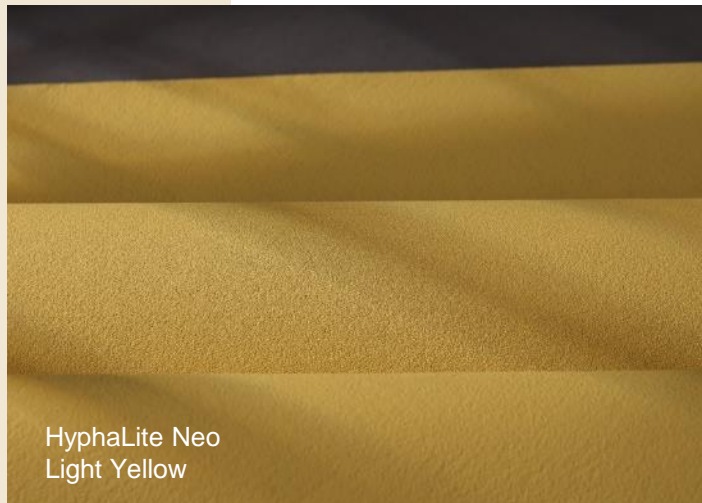
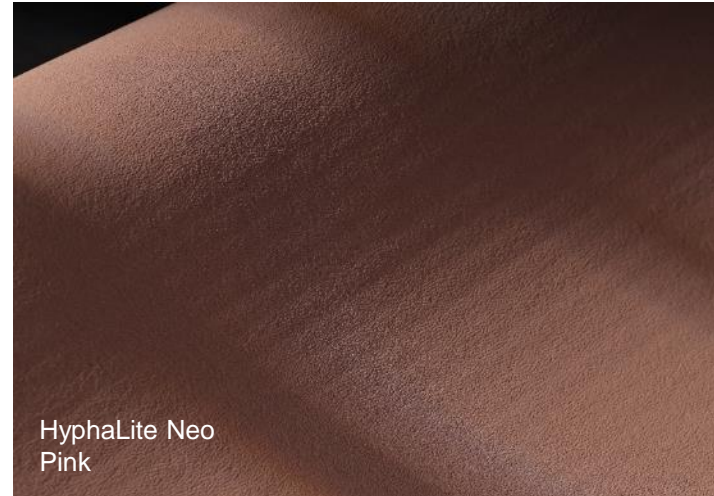
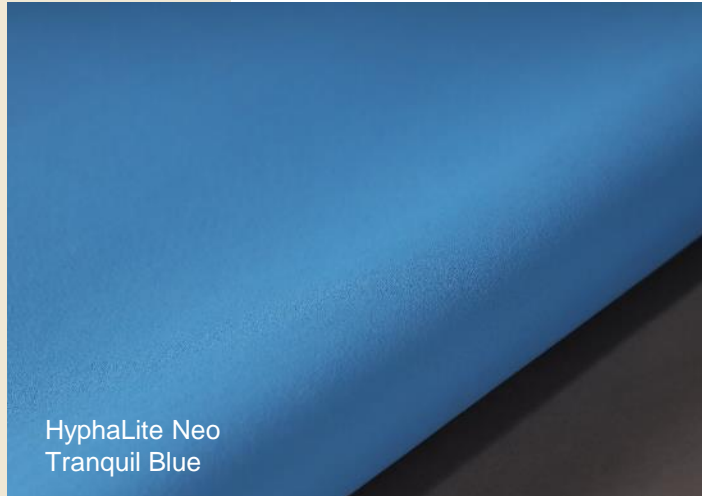


zero plastic | washable | biodegradable | breathable

HyphaLite Neo

- ▶ **Smooth**
- Milled**
- Embossed**
- Spray**
- Antique**
- 2TN**
- Pearl**

HyphaLite Neo





HyphaLite Neo

Smooth

Milled

▶ Embossed

Spray

Antique

2TN

Pearl



ISA nextgenmaterials

ISA INDUSTRIAL LTD. MACAU (CHINA) | USA | VIETNAM | CHINA | UK | HONG KONG (CHINA) www.isanextgenmaterials.com

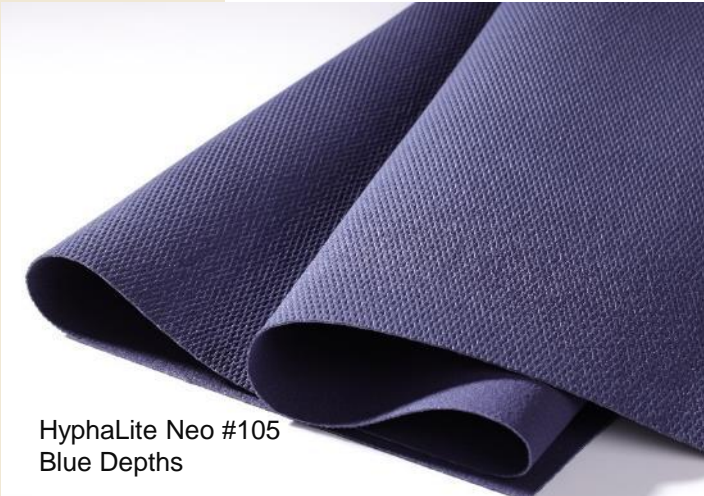


LITE

HyphaLite Neo #72



HyphaLite Neo #105



HyphaLite Neo #105
Blue Depths



HyphaLite Neo #105
Blizzard



HyphaLite Neo #105
Brook Green



shoes:
HyphaLite Neo #105
Blizzard



HyphaLite Neo

Smooth

Milled

Embossed

▶ Spray

Antique

2TN

Pearl



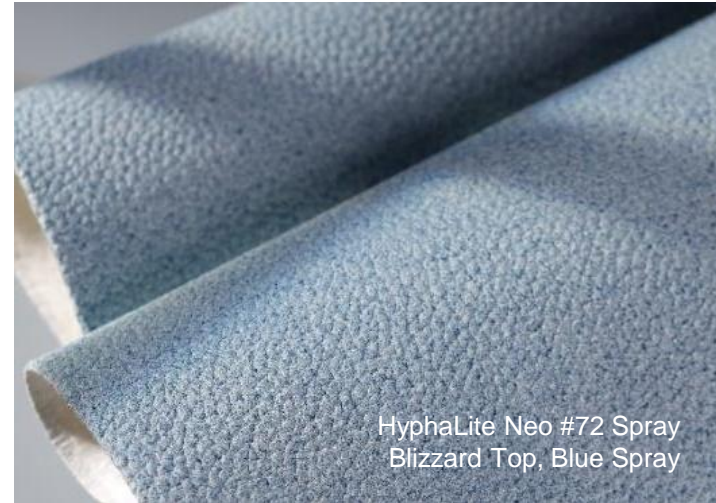
ISA nextgenmaterials

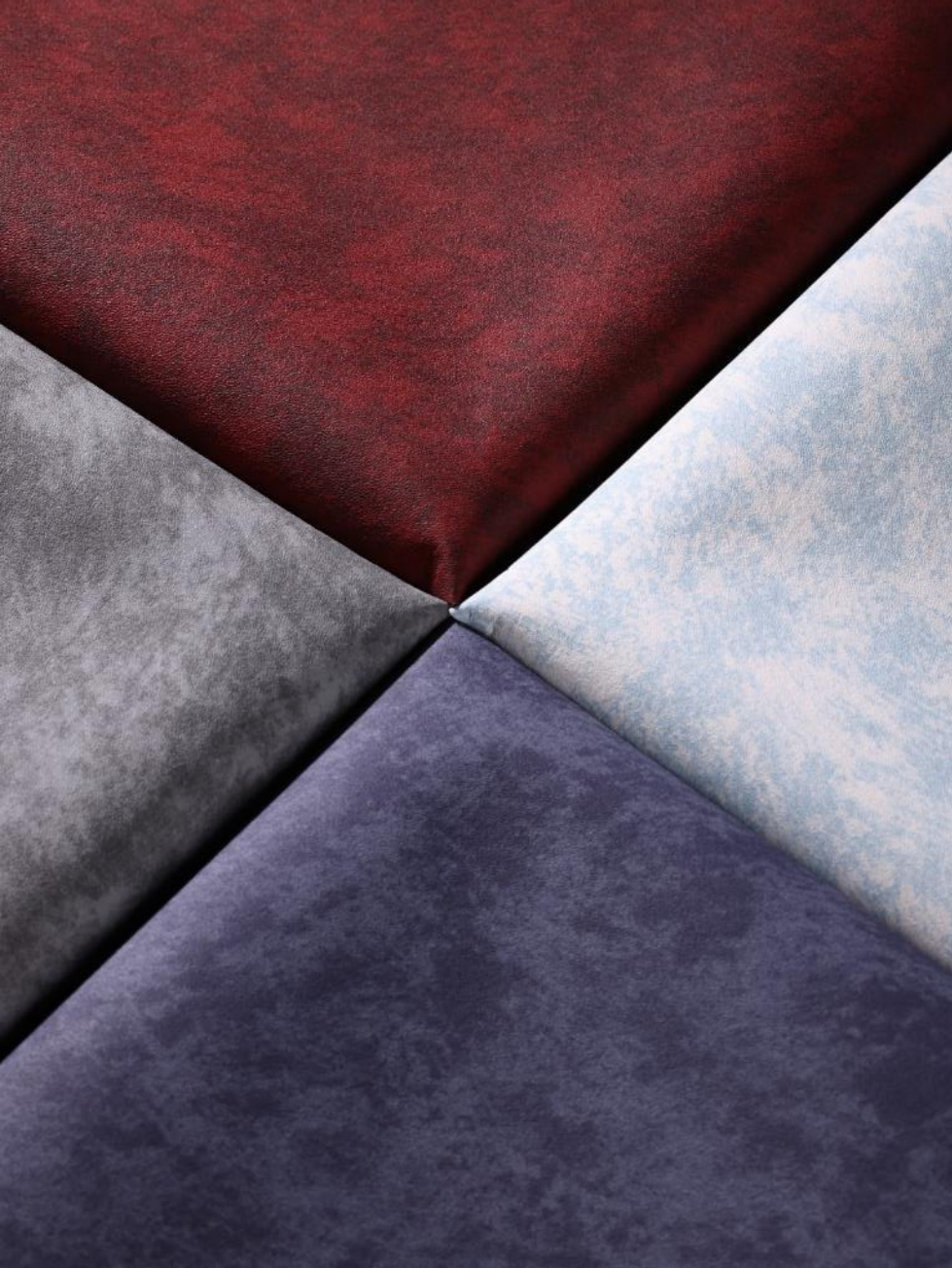
ISA INDUSTRIAL LTD. MACAU (CHINA) | USA | VIETNAM | CHINA | UK | HONG KONG (CHINA) www.isanextgenmaterials.com



LITE

HyphaLite Neo #72 Spray





HyphaLite Neo

Smooth

Milled

Embossed

Spray

▶ Antique

2TN

Pearl

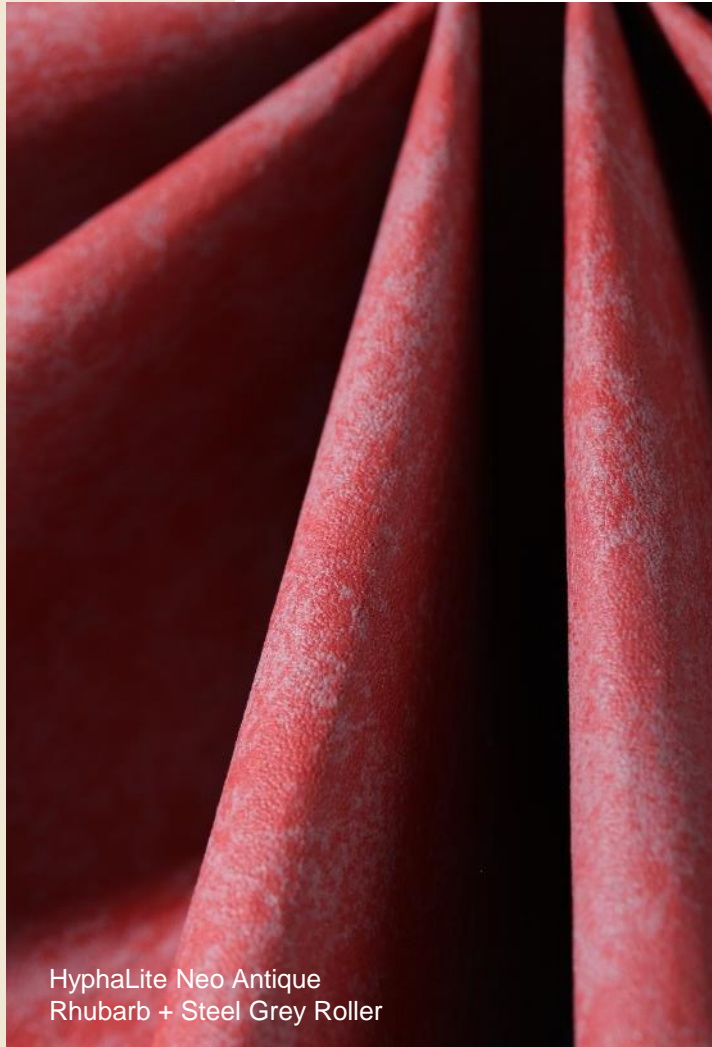


ISA nextgenmaterials

ISA INDUSTRIAL LTD. MACAU (CHINA) | USA | VIETNAM | CHINA | UK | HONG KONG (CHINA) www.isanextgenmaterials.com



HyphaLite Neo Antique



shoes:
HyphaLite Neo Antique
Alloy + Black Roller





HyphaLite Neo

Smooth

Milled

Embossed

Spray

Antique

▶ 2TN

Pearl

HyphaLite Neo 2TN



HyphaLite Neo 2TN
Yellow Iris Base, Nugget Top



HyphaLite Neo 2TN
Tranquil Blue Base, Deep Navy Top



HyphaLite Neo 2TN
Clove Base, Demitasse Top



shoes:
HyphaLite Neo 2TN
Clove Base, Demitasse Top



HyphaLite Neo

Smooth

Milled

Embossed

Spray

Antique

2TN

▶ Pearl



ISA nextgenmaterials

ISA INDUSTRIAL LTD. MACAU (CHINA) | USA | VIETNAM | CHINA | UK | HONG KONG (CHINA) www.isanextgenmaterials.com



HyphaLite Neo Pearl



Hyphalite Neo Pearl #72
Brown Sugar



Hyphalite Neo Pearl #66
Mirage Grey



Hyphalite Neo Pearl #72
Black



shoes:
HyphaLite Neo Pearl #39
Majolica Blue

HyphaLite Neo Repel

HyphaLite Neo Repel is a 99% biobased material made from natural latex, FSC-certified regenerated cellulose fibers and contains mushrooms.

Repel includes natural resins creating a barrier on the surface of the material which passes a standard rain test.

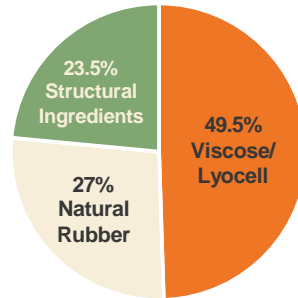
Available in all thicknesses.

Bio Content: **99%**

Thickness: **0.4 - 2.2mm***

Colors: **HyphaLite Neo Color Palette**

*Embossed version available in 0.9 - 2.2mm only



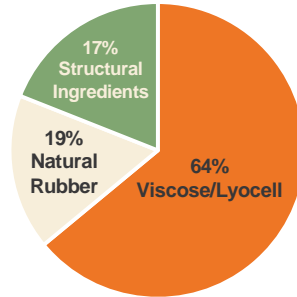
HyphaLite Nubuck

HyphaLite Nubuck is a special process that includes milling and creating a velvety soft touch and subtle tracking.

Bio Content: **100%**

Thickness: **0.9 - 2.2mm**

Colors: **HyphaLite Neo Color Palette**

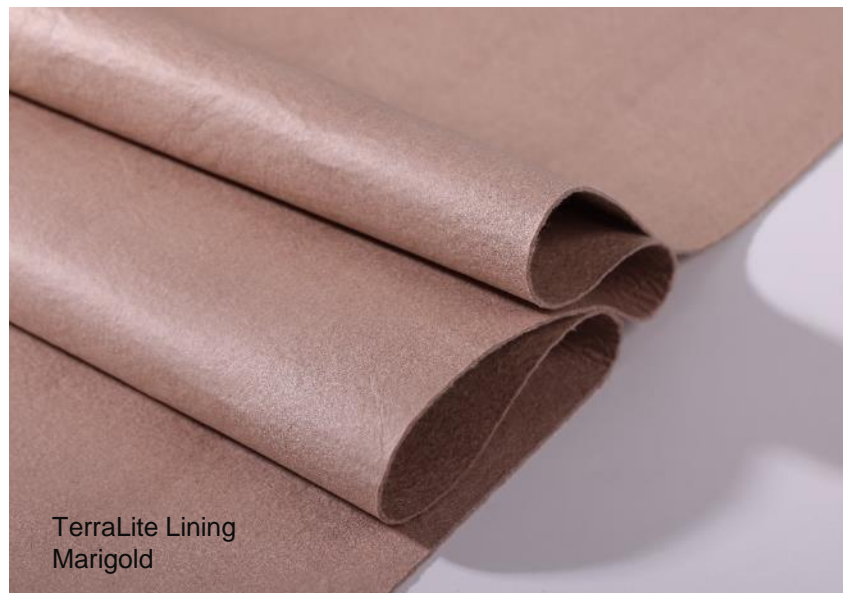


TerraLite

Developed by our COSM business unit, TerraLite offers a similar look to felted wool which is lightweight and breathable. Available with solid color or TerraLite Antique.

Bio Content: **100%**
Thickness: **0.9 - 1.8mm**
Colors: **TerraLite Color Palette**
Treatments: **Smooth or Antiqued**

100%
Viscose/
Lyocell

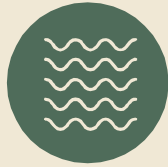


Ordering Info



1. Material

HyphaLite Neo
HyphaLite Neo Repel
HyphaLite Nubuck
TerraLite



2. Treatments

Smooth
Milled
Embossed
Spray
Antique
2TN
Pearl



3. Color

HyphaLite Neo Color Palette
TerraLite Color Palette



4. Thickness

0.4mm thickness range
0.4 - 0.8mm
0.9 - 1.3mm
1.4 - 1.8mm
1.8 - 2.2mm



5. MOQ

Sample: none
Production: 1,500 sqf

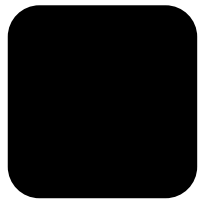


6. Lead Time

Sample: 2 weeks
Production: 4 weeks



HyphaLite Neo Color Palette



Black



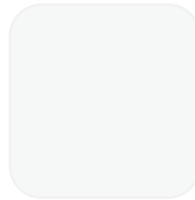
Steel Grey



Medium Grey



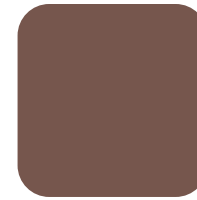
Mirage Grey



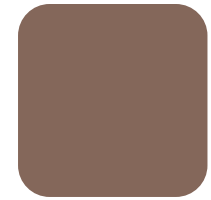
Blizzard



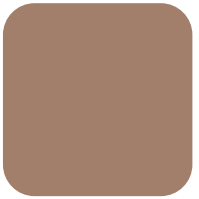
Demitasse



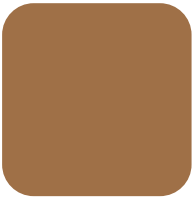
Coffee Brown



Clove



Ubrique



Brown Sugar



Starfish



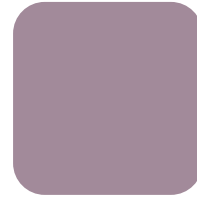
Irish Cream



Beige Hush



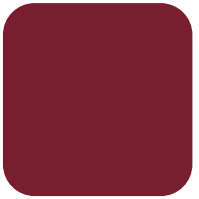
Thunder Purple



Digital Lavender



Purple Heather



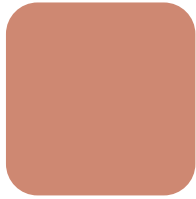
Rhubarb



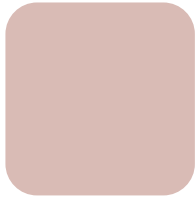
Luscious Red



Sunset



Fusion Coral



Pink



Nugget



Golden Yellow



Yellow Iris



Dark Green



Palm Leaf



Brook Green



Deep Navy



Tranquil Blue



Blue Depths



Light Blue



Mint

HyphaLite Neo Antique Color Palette



Irish Cream +
Beige Hush Roller



Deep Navy +
Tranquil Blue Roller



Coffee Brown +
Starfish Roller

1. Select the base color from our main HyphaLite Neo Color Palette.
2. Select the top roller color from our main HyphaLite Neo Color Palette.

TerraLite Color Palette



Scarlett



Orange



Yellow



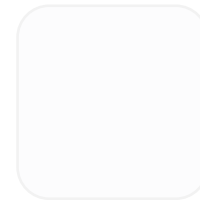
Marigold



Grey



Blue



White

Partner with Us

ISA is proud to offer specialized, creative marketing and co-branding services. Our in-house marketing team can work with you to create visually striking and informative digital and on-product sales tools. These complimentary services will ensure the best possible message resonates with your consumer.

Social Media



Web Banners



Box Inserts



Hang Tags

